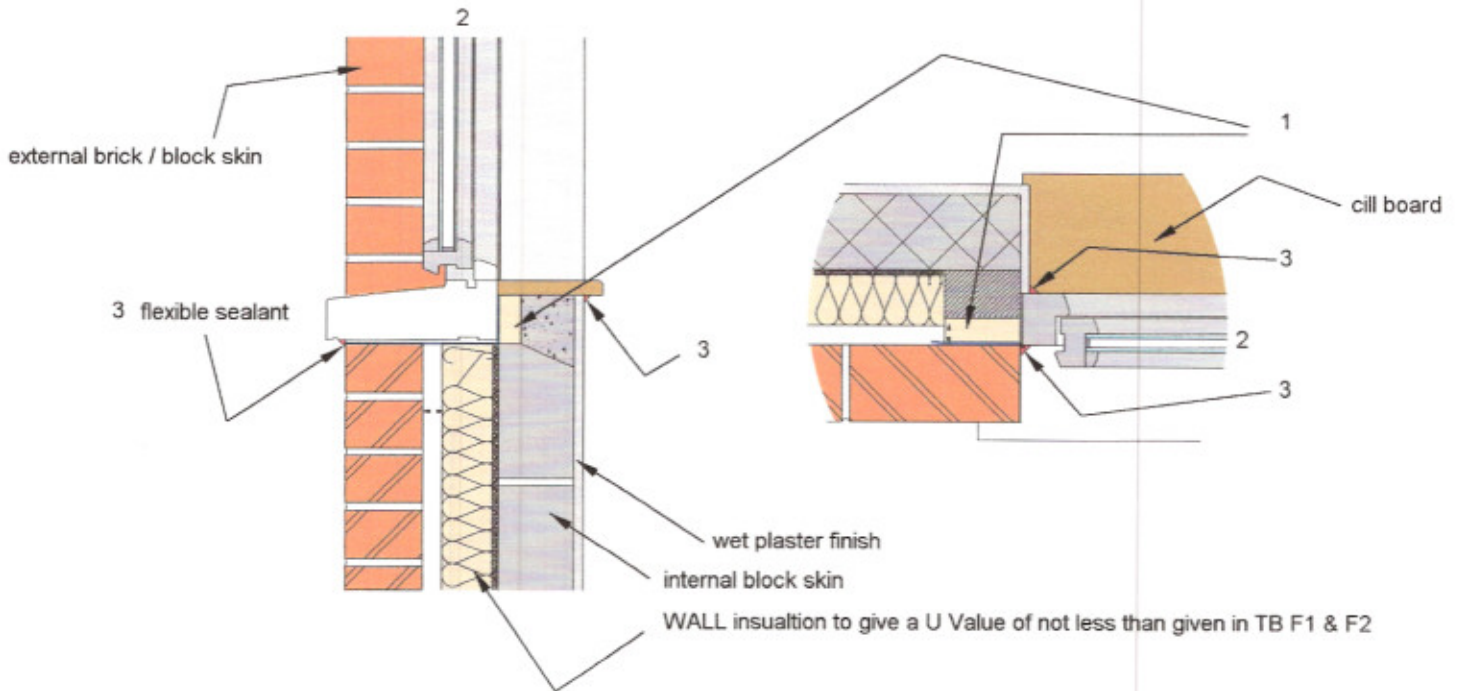


# TYPICAL JAMB , CILL DETAILS

"COLD BRIDGING ONLY"

4



## Notes

1. Proprietary insulation with minimum 25mm HD insulation considered acceptable
2. Window / door to give minimum U value as set out in TB F1 & TB F2
3. Sealant to front and back of frame/sills.

" NOTE - STANDARDS OF INSULATION WILL BE AS DETAILED ON PLANS "



**WESTERN GROUP**  
*Building Control Service*



*F1 & F2  
COMPLIANCE  
CHECKLIST*