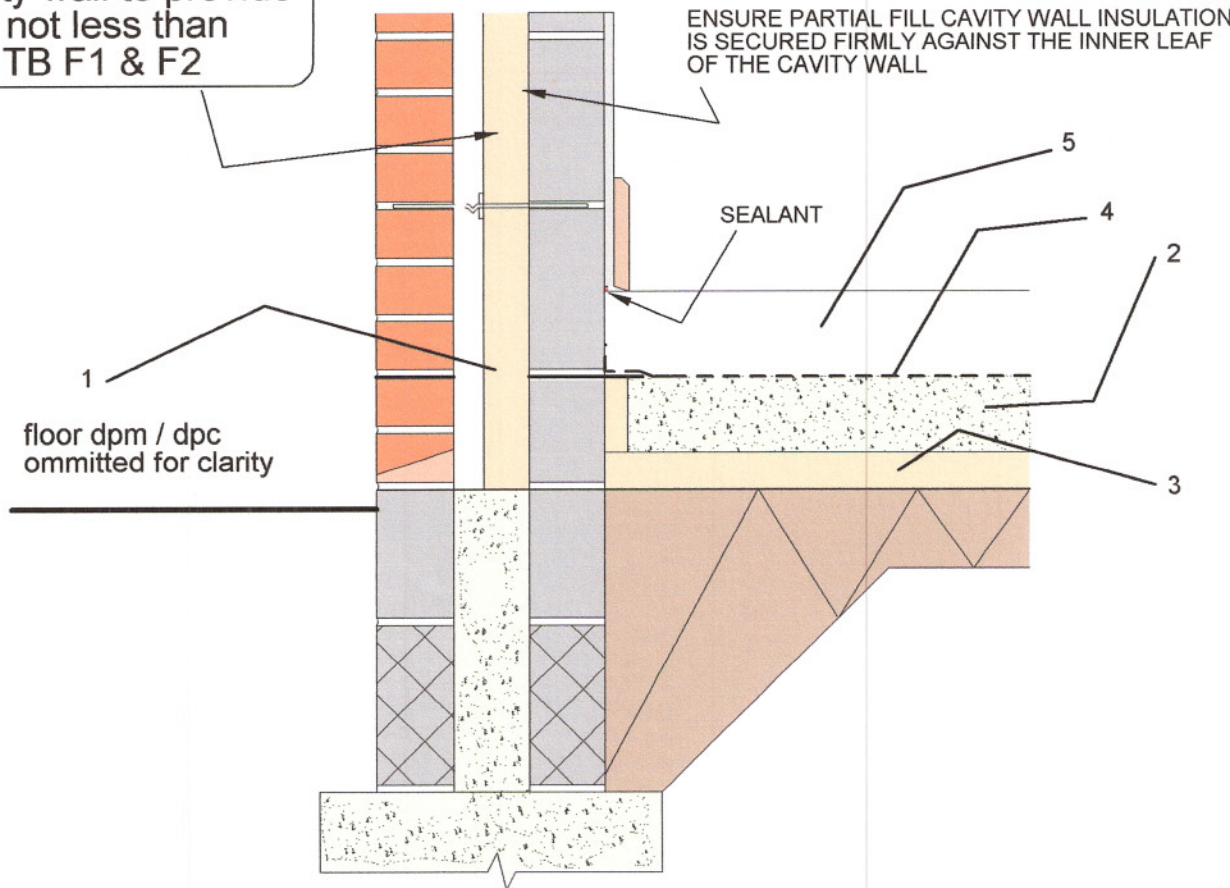


TYPICAL GROUND FLOOR DETAIL

" COLD BRIDGING ONLY "

external cavity wall to provide a U Value of not less than that given in TB F1 & F2



NOTES

1. CONTINUE WALL INSULATION AT LEAST 150MM BELOW TOP OF FLOOR INSULATION (OR PERIMETER INSULATION WHERE SCREED IS USED) AND SUPPORT ON A ROW OF TIES.
2. 100mm MINIMUM THICKNESS OF SUB - FLOOR CONCRETE
3. FLOOR INSULATION (REFER TO DRAWINGS FOR THICKNESS REQUIRED)
4. 1200 GAUGE DPM OVERLAPPED AND BONDED TO WALL DPC OR SEAL BEHIND SKIRTING.
5. SREED (MINIMUM THICKNESS 100mm)

" NOTE - STANDARDS OF INSULATION TO BE AS DETAILED ON PLANS "



WESTERN GROUP
Building Control Service



*F1 & F2
COMPLIANCE
CHECKLIST*