

DUNGANNON SOCIO ECONOMIC PROFILE



December 2007

TABLE OF CONTENTS	PAGE NO:
1. Population	3
2. Economic Activity	4
3. Unemployment	5
4. Jobs	6
5. Occupational Structures	7
6. Earnings	8
7. Migrant Workers	9
8. Agriculture	11
9. Enterprise	12
10. Enterprise Support	14
11. Skills and Education	16
12. Tourism	16
13. Housing	17
14. Deprivation	18

DUNGANNON SOCIO ECONOMIC PROFILE

1.0 Population

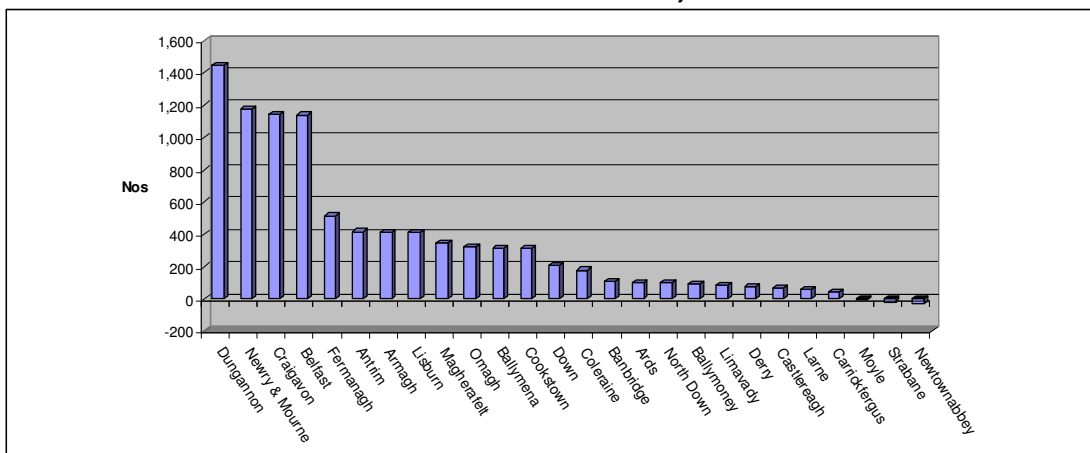
On Census Day, 29th April 2001 the resident population of Dungannon Local Government District (LGD) was 47,735. 2006 mid year population estimates show that the population had increased by 4,559 to 52,334 (9.6%). Over the same period, the population increase in Northern Ireland was 3.3%¹.

Mid year population estimates show that the population has increased by 3.1% (1,587) over the period 2005 to 2006 which is three times the NI population increase of 1% over the same period. This population increase in Dungannon LGD is attributable to:

- population growth through natural change i.e. the difference between births and deaths which was 343 and
- population gain due to net civilian migration which accounted for 1,244 people

Figure 1 illustrates that of the 26 District Council areas in NI, Dungannon experienced the highest level of net international migration during 2005 - 2006.

Fig. 1: Net International Migration by Local Authority Area (July 2005 – June 2006)



Source: NISRA July 2007

The demographic profile of the population based on 2006 estimates illustrates that the working age population is in line with the NI average but that there is a higher than average proportion of children in the area and a lower than average proportion of elderly.

¹ NISRA

Table 1: Age Structure, 2006

	Children 0-15	Working Age 16-64M/59F	Older People 65M/60F & over
Dungannon	23.4%	61.9%	14.7%
NI	21.8%	61.9%	16.3%

Source: NISRA

2.0 Economic Activity

Dungannon has a slightly lower rate of economic activity compared to the NI average, 71.8% compared to 72.1% respectively. However the contrast between males and females is more significant, with the economic activity rate for men 4.4% below and the rate for women 3.5% higher than the NI rate.

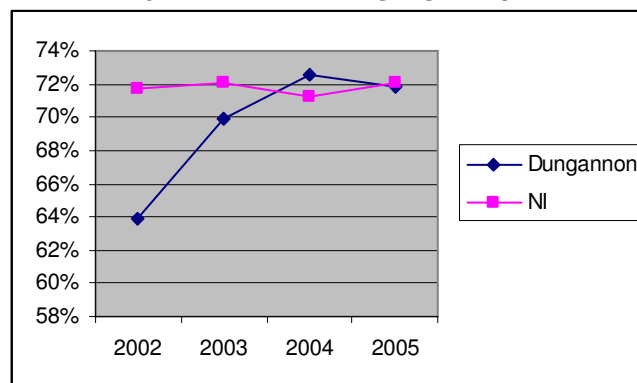
Table 2: Economic Activity, 2005

Economic Activity	NI		Dungannon	
	No (000's)	%	No (000's)	%
Total economically active	778	72.1	24	71.8
- Male	432	78.6	13	74.2
- Female	347	65.2	11	68.7
Total economically inactive	536	27.9	15	28.2

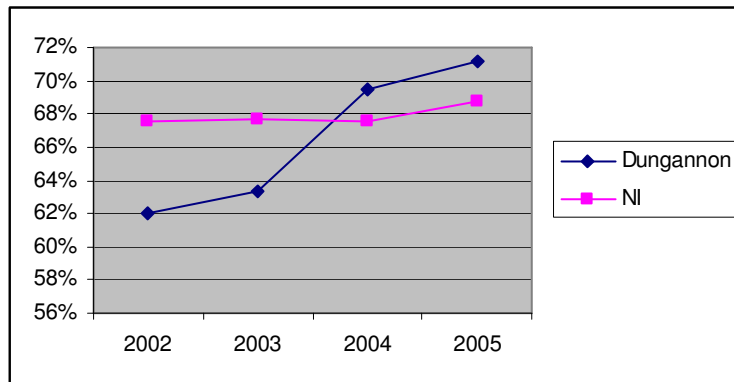
Source: DETI

Figures 2 and 3 illustrate an improved performance in Dungannon over the period 2002 to 2005 with regard to economic activity in general and employment specifically. In 2005 the working age employment rate was 2.4% higher than NI as a whole.

Fig. 2: Economically Active, Working Age Population, 2002 - 2005



Source: DETI

Fig. 3: Employment Rate, Working Age Population, 2002 - 2005

Source: DETI

On Census day 2001, 72.2% of the working age population living in Dungannon LGD worked in the area. Armagh and Craigavon were the next most popular destinations with 6% and 4.8% respectively travelling to work in these neighbouring District Council areas.

3.0 Unemployment

In September 2007 the total number of people in NI claiming unemployment related benefits was 23,810, of which 449 (1.8%) are located in Dungannon LGD. The Dungannon claimant count is 1.4% of the working age population which is below the NI total of 2.2%. This places Dungannon as the fourth lowest claimant count area of the 26 district Council areas. Over the last year the claimant count rate in Dungannon LGD has decreased by 0.2% compared to the rate for NI as a whole which has decreased by 0.5%. The five wards with the highest and lowest proportion of claimants at September 2007 is shown in tables 3 and 4.

Table 4: Wards with Highest Proportion of Claimants

Ward	Men	Women	Total
Ballysaggart	4.4	2.3	3.4
Mullaghmore	2.7	2.3	2.5
Coalisland South	4.0	1.0	2.4
Killymeal	2.4	1.8	2.1
Ballygawley	2.3	1.3	1.9

Source: DETI

Table 5: Wards with Lowest Proportion of Claimants

Ward	Men	Women	Total
Castlecaufield	0.9	0.9	0.9
Altmore	0.9	1.1	1.0
Coalisland North	1.1	1.0	1.0
Coalisland West & Newmills	1.8	# ²	1.0
Donaghmore	0.9	1.0	1.0

² # indicates disclosive data

Source: DETI

DETI figures show that in September 2007, 21% of claimants in NI have been unemployed for 1 year or more, compared to 13% for Dungannon, demonstrating a lower level of long term unemployment in the District.

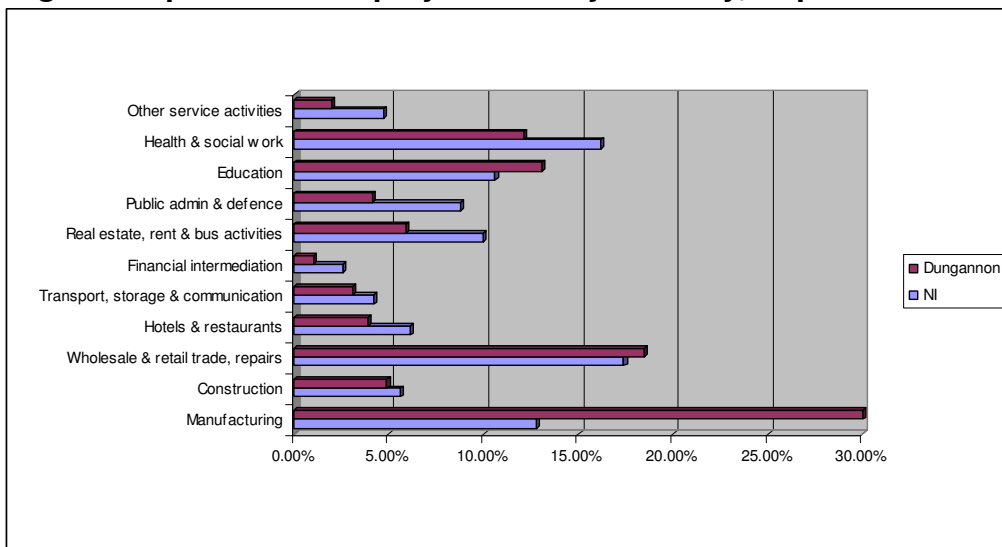
4.0 Jobs

The Census of Employment is a statutory survey that is conducted every two years in Northern Ireland. It provides information on the nature and characteristics of non agricultural businesses and indicates that the total number of employee jobs³ in Dungannon LGD was 19,332 in 2005 which constituted 2.8% of the total jobs in NI. Of these jobs, 30.3% were in the manufacturing sector and 63.6% were in the service sector. This compares to the NI economy in total in which 19.2% of jobs were in the manufacturing sector and 80.2% in the service sector. Of the jobs in Dungannon LGD, 68% were full time and 32% part time, in line with the NI equivalent breakdown.

During the period September 2003 to 2005 Dungannon experienced a 6.4% (1,157) rise in employee jobs, above the NI average of 3.7%. Of the 26 District Councils, Dungannon had the eighth highest jobs increase during this period.

Figure 4 illustrates a breakdown of employee jobs for Dungannon LGD by industry sector and highlights the strength of manufacturing which represents the largest sector for employee jobs, which at 30.3% is well above the NI manufacturing jobs total of 12.8%.

Fig. 4: Proportion of Employee Jobs by Industry, September 2007



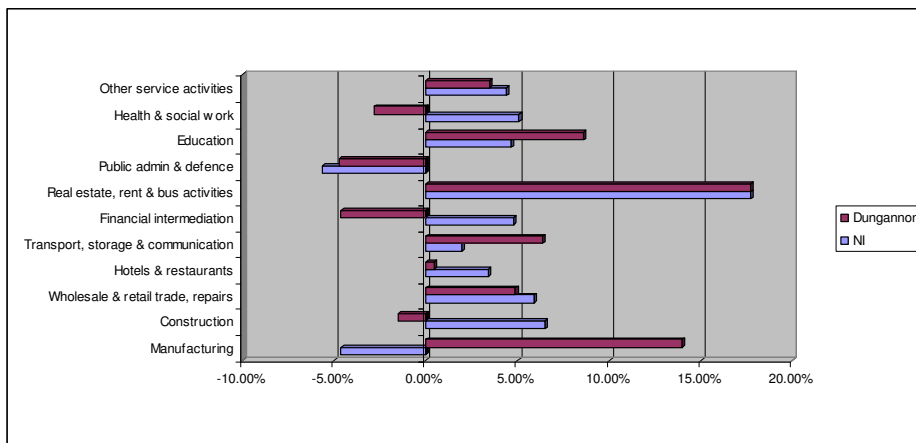
Source: DETI

³ Excludes agriculture

Figure 5 illustrates the change in employee jobs by sector over the period 2003 to 2005 and demonstrates the strength of the manufacturing sector in Dungannon LGD which has experienced a 14% increase in employee jobs between 2003 and 2005 compared to a NI loss of manufacturing jobs over the same period by 4.6%. Other sectors which have performed well over this period include the education sector which has experienced an increase in employee jobs of 8.6%, compared to the NI increase of 4.6% and the transport, storage and communication sector which has experienced an increase in employee jobs of 6.4%, compared to the NI increase of 2%.

Sectors which have under performed compared to NI trends include the health and social work sector, financial intermediation and construction, each of which has experienced a loss in employee jobs of 2.8%, 4.6% and 1.5% respectively.

Fig. 5: Change in Employee Jobs 2003 - 2005



Source: DETI

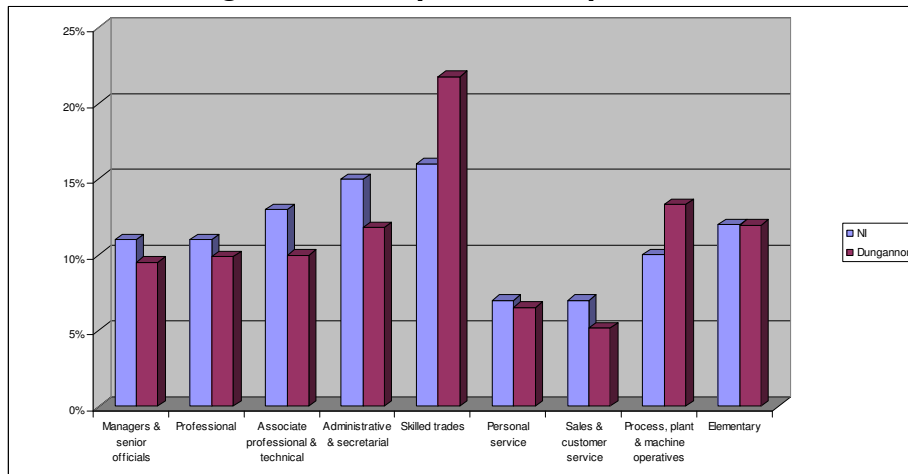
Key employers in Dungannon LGD are: Powerscreen, Dunbia and Moy Park. However the engineering and service industry scattered across the Borough also provides vital employment in the area.

The NI Census of Employment, September 2005 shows that 24% of employee jobs [\(19,291\)](#) in Dungannon LGD were public sector jobs compared to 32% for NI.

5.0 Occupational Structure

The 2001 census indicates that Dungannon’s occupational structure differs from that of NI, with a higher share of skilled trades and process plant and machinery operative occupations and lower levels of management and professional occupations.

Figure 6: Workplace Occupation Structure

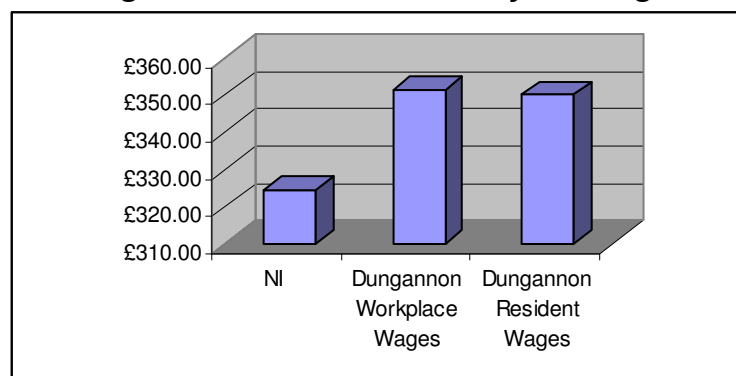


Source: NISRA

6.0 Earnings

The median gross weekly earnings for all employees in NI at April 2006 was £324.70⁴. In order to analyse Dungannon wages it is necessary to look at workplace wages i.e. wages paid by local businesses and resident wages i.e. wages earned by Dungannon residents. Figure 7 illustrates that median gross weekly earnings of those working in Dungannon LGD are £351.40, 8.2% higher comparative to NI as a whole and resident wages of those living in Dungannon are £350, 7.8% higher than NI as a whole.

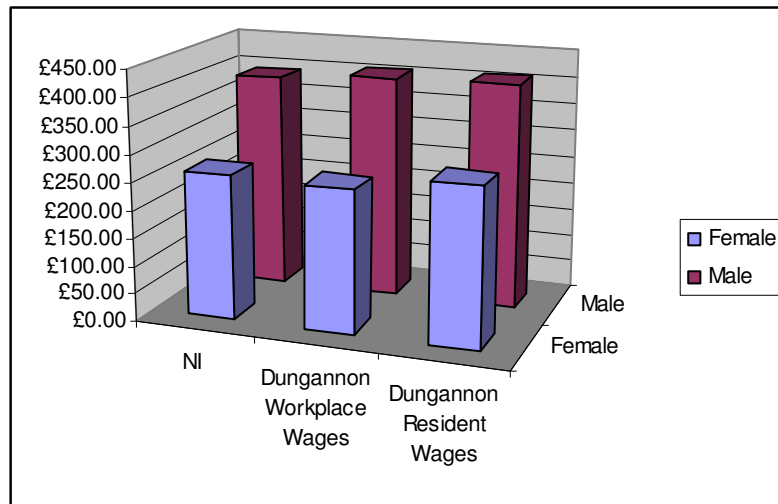
Fig. 7: Median Gross Weekly Earnings



Source: DETI

An analysis of wages by gender shows that workplace and resident wages for men are slightly higher in Dungannon than in NI as a whole by 3.5% and 4.4% respectively. For women, Dungannon workplace wages are 1.3% lower than for NI yet female resident wages are 8.8% higher.

⁴ NI Annual Survey of Hours and Earnings, 2006

Fig. 8: Median Gross Weekly Earnings by Gender

Source: DETI

7.0 Migrant Workers

Of the 15 member states of the EU before the accession of the eight Central and Eastern European countries (referred to as the “A8” countries)⁵, initially only Ireland, Sweden and the UK granted A8 nationals access to work. Other EU 15 countries are beginning to follow suit with Finland, Greece, Portugal and Spain allowing free movement from May 2006. Full free movement within the EU of A8 nationals should be in place by 2011.

NISRA’s Long Term International Migration Estimates for Northern Ireland (2005-2006) presents statistical information on migrant workers from a number of sources:

a) Worker Registration Scheme

The Worker Registration Scheme (WRS), managed by the Home Office, is used to formally register migrant workers from the eight new EU Eastern European Accession countries that acceded in May 2004. Between 1st May 2004 and 31st March 2007 just under 24,000 people were registered and working in Northern Ireland, of which approximately 2,000 were working in Dungannon LGD. In the period 2006 – 2007, the number of migrant workers registered on the WRS and working in Dungannon was 815 which was 9% of the NI total for that period. Dungannon was the third most popular local authority destination for such migrant workers during this period.

Most people registered on the WRS in Northern Ireland are from Poland although Northern Ireland also has a higher number of registrations from Lithuania compared to the rest of the UK.

⁵ The A8 countries are the Czech Republic, Estonia, Hungary, Latvia, Lithuania, Poland, Slovakia and Slovenia

b) Worker Permits Scheme

Work permits are issued by Work Permits (UK), part of the Home Office's Immigration and Nationality Directorate. A work permit relates to a specific person and a specific job. The work permit scheme lets UK employers recruit or transfer people from outside the European Economic Area (EEA), while still protecting the interests of resident workers. Between 1st April 2004 and 31st March 2006, there were just over 6,700 work permits issued to people working in Northern Ireland, of which 325 were registered to people working in Dungannon LGD. This is equivalent to 5% of the work permits issued in Northern Ireland.

c) National Insurance Number Registrations

National Insurance Numbers are required for employment purposes or to claim benefits and tax credits. Foreign nationals living in Northern Ireland apply to their Social Security or Jobs and Benefits Office for the issue of a National Insurance Number. In 2004/05 5,826 non UK nationals living in Northern Ireland were allocated a national insurance number. In 2005/06 this figure increased to 15,614. The corresponding figures for the Dungannon LGD were 606 and 1,098 respectively for the same period, representing 7% of the Northern Ireland total. Dungannon ranks as joint third local authority area of residence (after Belfast and Craigavon) for non UK nationals seeking a national insurance number.

A8 countries account for approximately two thirds of National insurance Numbers allocated to non-UK nationals, with the highest numbers for Polish, Lithuanian and Slovakian nationals. The NIHE report on Mapping BME and Migrant Workers in Dungannon & South Tyrone Area reports that the Dungannon Social Security Agency Office recorded a total of 38 nationalities, excluding British and Irish, over the period April 2003 to October 2005, including six nationalities from the EU, seven of the A8 countries, three of the four EU applicant countries and 22 nationalities from outside the EU, A8 and Applicant countries. Table 6 shows the most common nationalities of applicants and the total number of applicants.

**Table 6: NINO Applicants at Dungannon Social Security Office
April 03 -Oct 2005**

	03/04	04/05	05/06
Portuguese	358	336	36
Lithuanian	10	413	189
Polish	30	149	54
Ukrainian	21	33	8
Latvian	0	35	21
Slovakian	0	0 24	25
Indian	5	27	<5
Moldovan	20	20	8 0
Czech	<5	<5	8 6
Brazilian	7	7 5	<5
Total	497	1,137	360

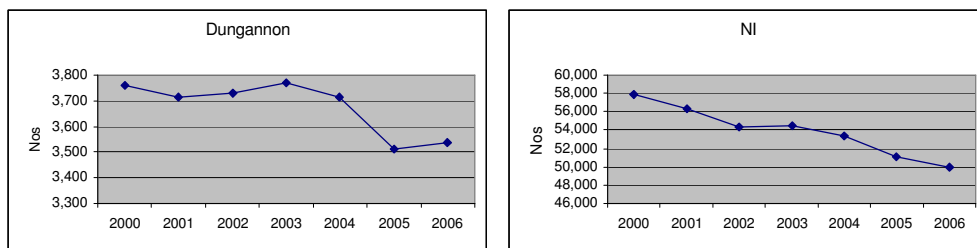
Source: DSD Operations Directorate Support, NIHE BME Report 2007

The main employer of migrant workers (2006 survey), is Dun**biagannon Meats** – approximately 344 migrant workers are based at the Dungannon factory. Main nationalities include 94 Portuguese, 148 Polish, 81 Lithuanian, 10 Latvian, 8 Brazilian, 7 East Timorese, and 5 Moldovan. Moy Park is another major employer although information is not currently available⁶.

8.0 Agriculture

Agricultural performance in Dungannon has been following the downward decline of the NI economy as illustrated in figures 9 and 10, although at a lesser rate. Over the period 2000 to 2006, the NI agricultural sector has experienced a 13.6% decline in agricultural employment with Dungannon LGD experiencing a 5.8% decline over the same period. The number of farms in NI has declined by 10.5% during this period, with Dungannon LGD experiencing a corresponding 5.5% decline.

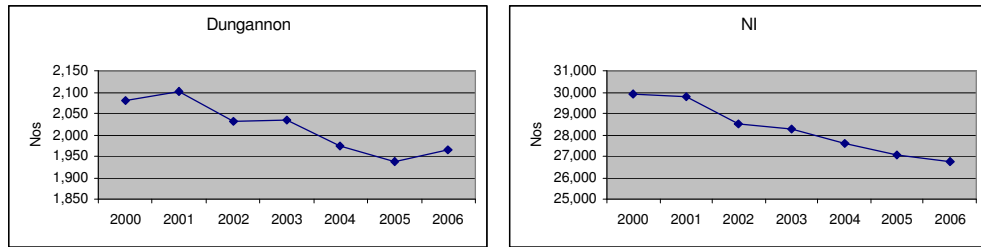
Fig. 9: Agricultural Employment



Source: DARD

⁶ NIHE BME Report 2007

Fig. 10: Number of Farm Businesses

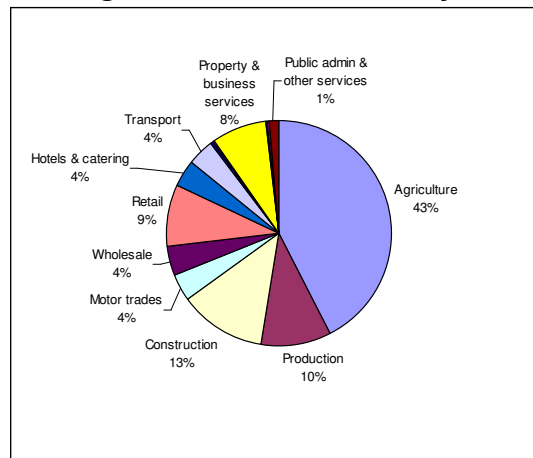


Source: DARD

9.0 Enterprise

In 2006 businesses were legally obliged to register for VAT once their turnover reached a threshold of £61,000. The number of VAT registered businesses in Dungannon LGD in 2006 was 2,865 and the figure in 2005 was 2,755 which is an increase of 110 businesses (4%) over the year⁷. This was the fifth highest increase recorded across all 26 District Council areas and compares favourably to the NI increase of 2.5% over the same period. The breakdown of these businesses by sector is illustrated in figure 11.

Fig. 11: VAT Registered Businesses by Industry Group

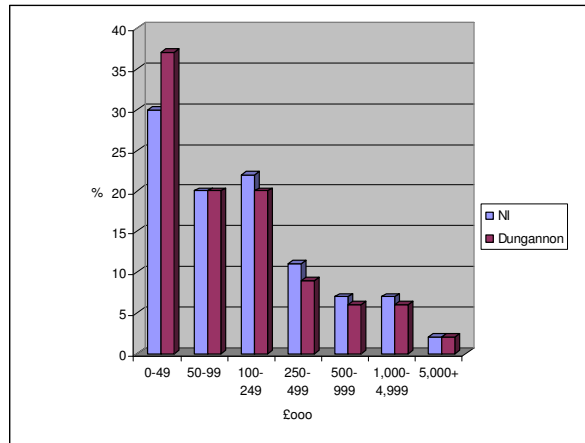


Source: DETI

37% of VAT registered businesses in Dungannon in 2006 report a turnover less than £50,000 and the Inter Departmental Business Register highlights that four District Councils in NI report more than a thousand VAT registered businesses with a turn over of less than £50,000, of which Dungannon is one.

⁷DETI Inter Departmental Business Register, June 2007

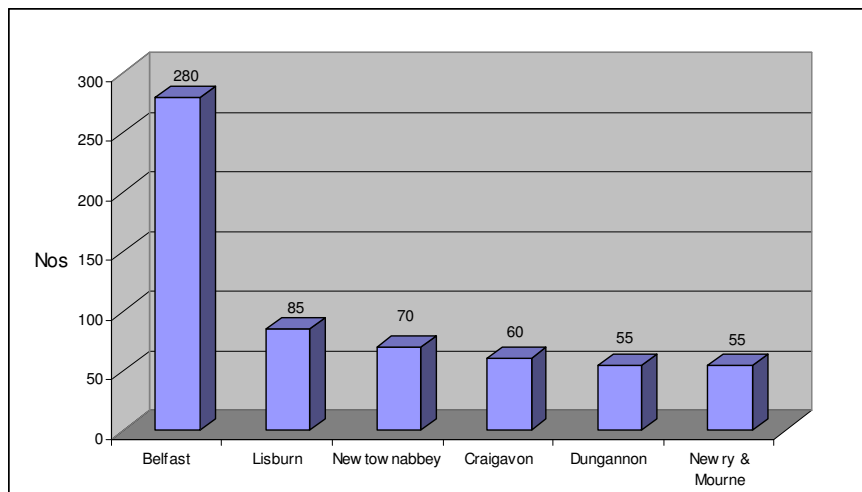
Fig. 12: VAT Registered Businesses by Turnover



Source: DETI

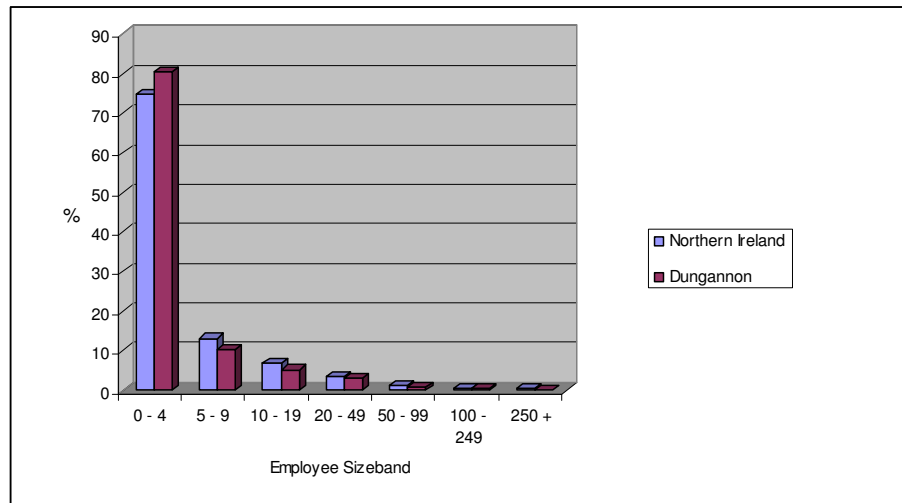
Dungannon LGD ranks joint fifth out of the 26 District Council areas, with Newry & Mourne District Council area, in terms of the number (55) of VAT registered businesses reporting a turnover greater than £5 million.

Fig. 13: District Council Comparison of VAT Registered Businesses with a Turnover Greater than £5 million



Source: DETI

The private sector in Dungannon LGD is characterised by a micro business sector, with 80% of VAT registered businesses with less than 5 employees and 90% with less than 10 employees. Comparative figures for NI are 75% and 83% respectively.

Fig. 14: VAT Businesses by Employee Sizeband

Source: DETI

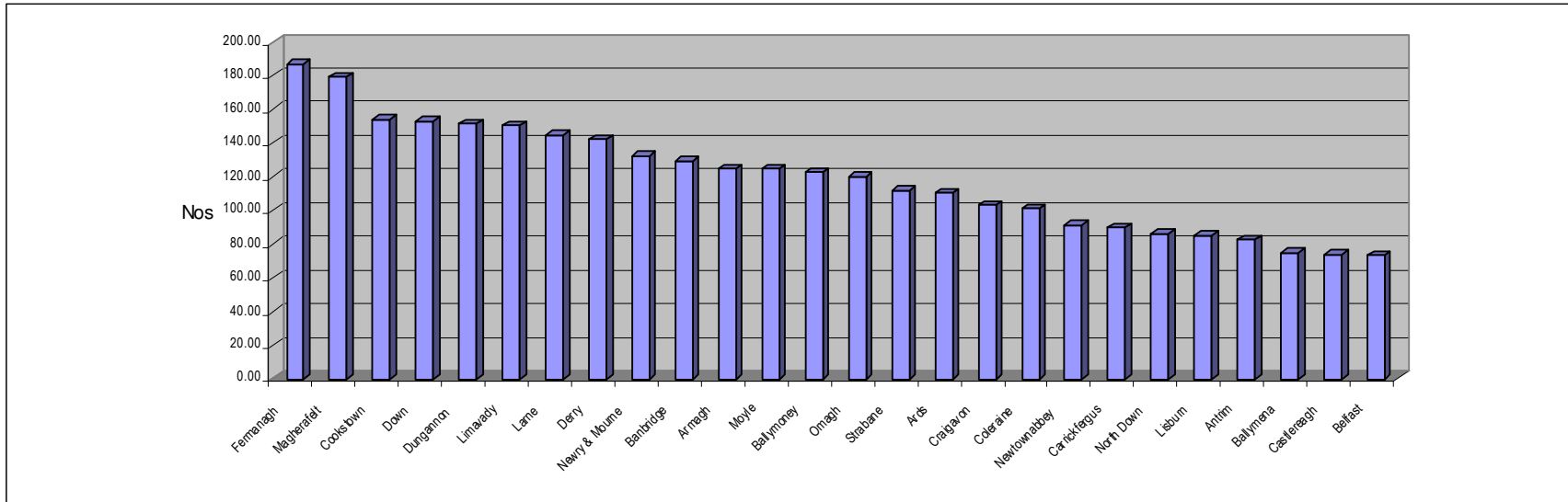
10.0 Enterprise Support

During the period 2002 to 2005, Invest NI made 456 offers of assistance to businesses in Dungannon LGD, totalling £8.5 million approximately, towards a planned investment in the area of £44.8 million approximately. Of all the 26 District Council areas, Dungannon ranks third during this period in terms of the numbers of offers of assistance made (behind Belfast and Derry) and eighth in terms of the level of assistance offered.

During this period Invest NI supported a total of 346 new business start ups in Dungannon LGD. Of these businesses, 12 (3.5%) were externally focussed i.e. have the potential for growth, primarily through the development of markets outside Northern Ireland and 334 (96.5%) were locally focused i.e. those whose market focus is primarily within Northern Ireland. Figure 14 illustrates that Dungannon LGD is ranked 5th out of the 26 District Council areas with regard to Start a Business approvals processed by Invest NI during the period 2002 to 2007, per 10,000 head of adult population. Invest NI make specific reference in their Performance Report 2002/03 to 2004/05 that:

“Further research is required to achieve a better understanding of why areas such as Magherafelt, Fermanagh, Cookstown and Dungannon display higher rates of start-up activity. It is speculated that there are many underlying reasons, which are associated with the rural nature of these areas, such as the number of farming businesses. This may result in a higher propensity to engage in entrepreneurial behaviours, since such individuals would already be familiar with the funding and management issues relating to self employment. Compared to more urban areas, there are also fewer alternative employment opportunities.”

Figure 14: Invest NI Start a Business Programme Approvals by District Council Area Per Head of Adult Population 2002/03 to 2006/07⁸



Source: Invest NI

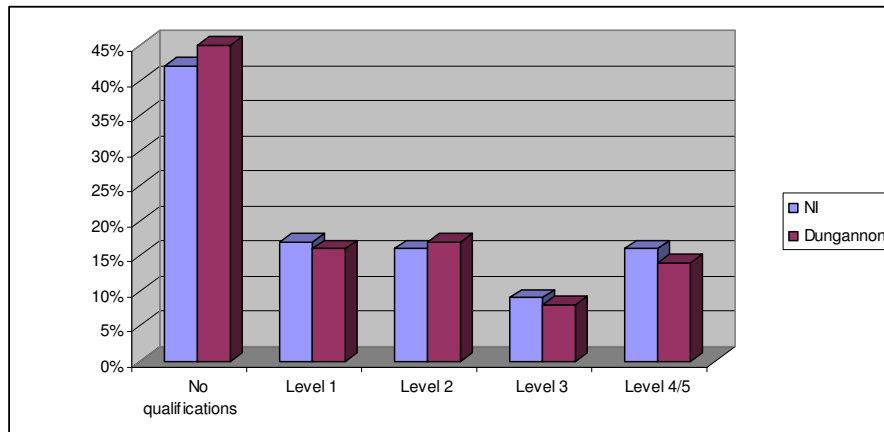
⁸ Figures for 2006/07 are provisional and may be subject to amendment

11.0 Skills and Education

Dungannon LGD falls within the Southern Education and Library Board area. At the time of the 2001 census, the percentage of the working age population in Dungannon LGD with no qualifications was 45%, which is higher than the NI average of 42%. Educational attainment of the remainder of the population was:

- 16% have Level 1 qualifications – 1+ GCSE pass, NVQ level 1, Foundation GNVQ
- 17% have Level 2 qualifications – 5+ GCSE passes, NVQ level 2, Intermediate GNVQ
- 8% have Level 3 qualifications – 2+ A levels, 4+ AS levels, NVQ level 3, Advanced GNVQ
- 14% have Level 4/5 qualifications – First and Higher degree, NVQ level 4 and 5 and qualified teachers, nurses, doctors and dentists

Fig. 15: Educational Attainment



Source: NISRA

Of those who left school in 2004-05, 65.5% gained 5 or more GCSE's at grade C and above, compared to a NI figure of 63.1%. 43.2% went on to Higher Education and 30% went into Further Education. This compares favourably with the NI figures of 38.2% and 27.6% respectively.

12.0 Tourism

NITB Local Authority tourism estimates show that Dungannon LGD benefited in 2006 from 61,000 tourist trips, 1.9% of the total to NI, 249,600 tourist nights, 2% of the NI total and £8.1 million tourism spend, 1.7% of the total spend in NI.

The number of tourist trips and the value of tourism spend is down on the 2005 performance estimates by 3.4% and 3.5% respectively, however the number of visitor nights has increased on the 2005 figure by 1.6%. When compared to Northern Ireland performance across the sector table 7 illustrates that:

- The number of trips in general was also down for the sector as a whole
- Dungannon has performed better than the sector in general which experienced a decline in the number of visitor nights
- The Northern Ireland tourism sector experienced an increase in visitor spend over the period 2005 – 2006, which is not reflected in Dungannon which experienced a decline in visitor spend.

Table 6: Dungannon LGD Tourism Estimates

Year	Trips		Nights		Spend	
	(000)	%	(000)	%	(£ million)	%
2005 ⁹	63.2	2.0	245.5	2.0	8.4	1.8
2006 ¹⁰	61.0	1.9	249.6	2.0	8.1	1.7

Source: NITB

Table 7: Dungannon LGD Tourism Performance 2005 - 2006

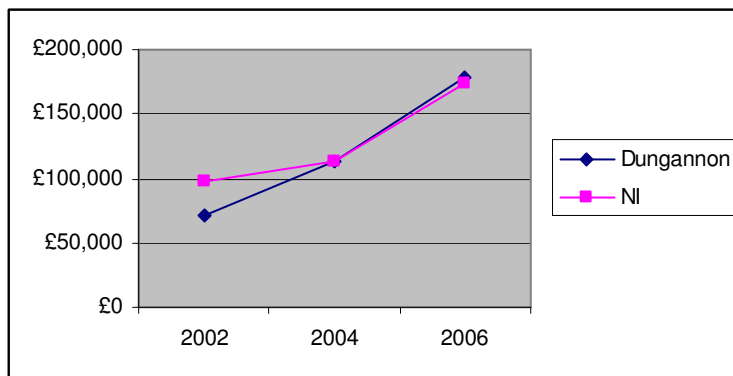
	Performance 2005 – 2006		
	Trips	Nights	Spend
Dungannon	-3.4%	1.6%	-3.5%
NI	-5.3%	-2.6%	3.0%

Source: NITB

13.0 Housing

The Northern Ireland housing market has been the fastest growing in the UK over the last one to two years and figure 16 illustrates that average house prices in Dungannon LGD have mirrored the overall upward trend in Northern Ireland. Average house prices in Dungannon in 2002 were 27% below the NI average but have increased by 2006 to 2% higher than the NI average.

Fig. 16: Average House Prices



Source: UU, Quarterly House Price Index, District Housing Plan Dungannon & South Tyrone Borough 2007

⁹ Due to a change in the survey methodology relating to domestic trips, these figures cannot be compared to any previous year.

¹⁰ Due to a change in the survey methodology relating to domestic trips, these figures cannot be compared to any years' data prior to 2005

The Affordability Index produced by the University of Ulster for 2006 shows that there were no houses sold in Dungannon LGD in 2006 which were affordable to first time buyers.

Table 8 profiles the housing market in Dungannon LGD and shows the higher than average number of houses owned outright and owner occupied.

Table 8: Dungannon LGD Housing

	Dungannon	NI
Number of households (2001)	16,259	626,718
% owner occupied	73.5	69.6
% rented	26.5	30.4
% owned outright	37.2	29.4
% lone pensioner	12.4	12.8
% lone parent with dependable children	6.9	8.1
Number of domestic properties (2003)	18,972	685,676
% terraced	20.4	31.0
% apartments	3.5	9.4
% semi-detached	23.5	24.0
% detached	52.5	35.6

Source: NISRA

Rate Collection Agency statistics show that in 2006 11.2% of the housing stock in Dungannon LGD was empty. This was an increase of 69 homes on the 2005 figure.

14.0 Deprivation

Northern Ireland Multiple Deprivation Measures produced by NISRA during 2005 highlight that;

- Dungannon LGD was ranked as the 9th most deprived district council area in Northern Ireland, based upon an average of scores of output areas across the district.
- Dungannon LGD has an Extent score of 9%, this means that 9% of the Dungannon population live in the most deprived Super Output Areas in Northern Ireland.
- The Income Scale shows that there are 11,920 people in Dungannon LGD experiencing Income Deprivation
- On the Income deprivation scale measure, Dungannon LGD has a rank of 9 out of the 26 District Council areas
- The Employment scale shows that a total of 4,331 people in Dungannon LGD experience employment deprivation.

- Within Dungannon LGD the most deprived Super Output Area (SOA) is Coalisland South, ranked 98¹¹ in NI in terms of multiple deprivation i.e. within the top 15% most deprived SOAs in NI, 38 with regard to Income Deprivation (top 5% most deprived SOAs) and 106 with regard to Employment Deprivation (top 15% most deprived SOAs) .
- Coalisland South and Ballysaggart rank 62 and 81 respectively in terms of Income Deprivation Affecting Children, which places these Super Output Areas within the top 10% most deprived SOAs in NI
- Coalisland South is the fourth most deprived Super Output Area in NI with regard to Income Deprivation affecting Older People (top 1% most deprived). Other Areas that exhibit deprivation with respect to this domain include Coalisland North ranked 35 (top 5%), Washing Bay ranked 44 (top 5%), Ballysaggart ranked 81 (top 10%), Drumglass ranked 95 (top 10%) and Ballygawley ranked 109 (top 15%).
- Ballysaggart falls within the top 10% of Super Output Areas ranked as deprived in terms of crime and disorder
- Ballysaggart and Fivemiletown fall within the top 10% of Super Output Areas ranked as deprived in terms of their Living Environment
- 50% of Dungannon's Super Output Areas are ranked within the top 15% most deprived SOAs in NI with regard to proximity to services. These include Caledon (11), Altmore (19), Clogher (21), Augher (28), Ballygawley (31), Aughnacloy (35), Fivemiletown (64), Castlecaufield (78), Benburb (94), Washing Bay (95) and Killyman (111).

¹¹ out of a total of 890 Super Output Areas